

LED

SERIES 746 PRO LT

Industrial dust- and waterproof luminaires

With 1 and 2 LED-tubes.

YOUR MAIN BENEFITS:

This product family has been **designed for LED-tubes**. Thanks to its special construction this model offers you an additional price advantage: It can be used without any gear tray.

Full range available in IP 65 and IP 66

CE

746 PRO LT



IP65



FIELD OF APPLICATION:

Thanks to the construction principals of gasket, closing system and diffuser our fixtures ensure a high grade of protection (IP 65, IP 66) against dust, contamination and water permeation. In accordance with their IP grade they can be widely used to illuminate spaces with dusty, humid environment.

When using outdoors, the fittings should be protected against direct sunlight and adverse weather conditions.

TECHNICAL DESCRIPTION AND BENEFITS:

■ **Housing:** It is made of flame retardant glass-fibre reinforced polyester (on request suitable for 850°C glow wire test too), in light grey (RAL7035) colour. This material has very good temperature resistance, mechanical stability, furthermore it is a good electrical insulator, it resists the impacts of several chemicals and the impacts of weather conditions. Its stability of size and shape at changing temperatures is excellent.

■ The **diffuser** is available as follows: injection moulded **acrylic** (PMMA) in two versions:

1. transparent, with longitudinal prisms.

2. light opalescent, designed with respect to their optical characteristics, made with photo etching.

Main advantages of PMMA: Very good transparency (better than the transparency of glass), unique non-aging properties, chemical and **UV-resistance**.

Injection moulded **polycarbonate** (PC). Main advantages: high mechanical strength and high heat and shock resistance and excellent transparency. The PC diffusers are made with optically designed longitudinal, internal prisms and are **UV resistant**.

■ **The gasket** between the diffuser and housing is made of non-aging PU (polyurethane) foam. As option gasket with enhanced resistance is available.

■ **Fixing the diffuser to the body:** with highly resistant clips made of polyamide or with stainless steel clips

■ **Gear tray** (reflector): **No gear tray needed.** The electrical components are mounted directly into the housing. As option white powder coated steel sheet gear tray is available.

■ **Way of installing:** direct (with screws) onto the wall or ceiling resp. suspended.

■ **Electrical components:** The adequate power supply is ensured through electronic driver, that is built in into the LED-tube.

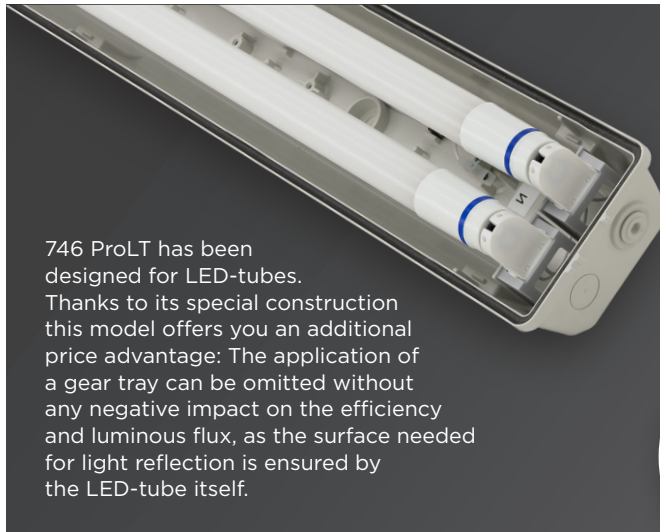
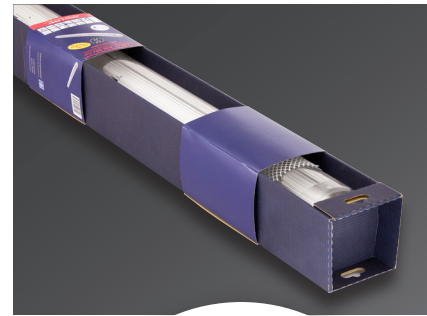
Option:

IP66



Main technical options

Optimized economical packaging with plastic net. On request traditional carton box or retail-box packaging available.



746 ProLT has been designed for LED-tubes. Thanks to its special construction this model offers you an additional price advantage: The application of a gear tray can be omitted without any negative impact on the efficiency and luminous flux, as the surface needed for light reflection is ensured by the LED-tube itself.

The light opalescent PMMA diffusers, designed with respect to their optical characteristics, are made with photo etching and are UV resistant.



Fixing of the diffuser to the body: With highly resistant plastic clips made of polyamide or with stainless steel clips.



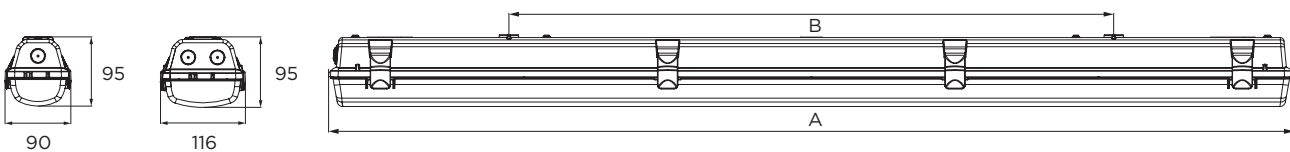
746 PRO LT

Technical data (extract):

Type	Lampholder	Power (W)	Luminous flux (lm)	Dimensions A (mm)	B (mm)	Weight (kg)
746 Pro LT equipped with Retrofit LED-tube (Philips Master LED)						
746 Pro LT 1x600	T8/G13	1 x 10W	660	699	415	1,19
746 Pro LT 1x1200	T8/G13	1 x 19W	1 320	1 277	800	2,47
746 Pro LT 1x1500	T8/G13	1 x 24W	1 520	1 577	1 100	2,57
746 Pro LT 2x600	T8/G13	2 x 10W	1 320	699	415	2,31
746 Pro LT 2x1200	T8/G13	2 x 19W	2 640	1 277	800	3,35
746 Pro LT 2x1500	T8/G13	2 x 24W	3 040	1 577	1 100	3,37

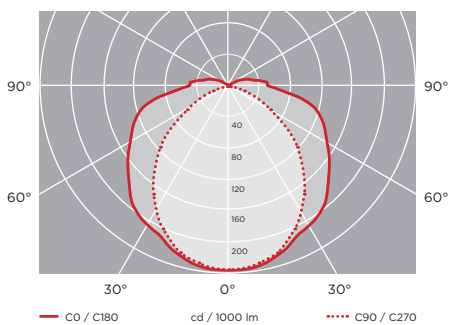


Schematic drawing with main dimensions:

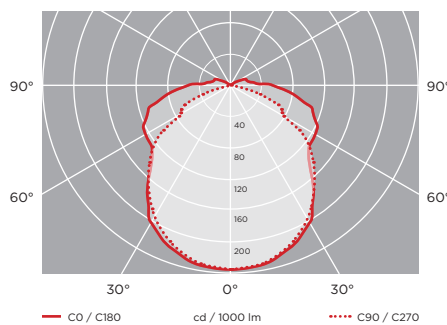


Photometric curves:

746 PRO LT 1x19W (LED tube)



746 PRO LT 2x24W (LED tube)



Further options:

- through wiring
- reflector (gear tray)
- rapid connector
- halogen-free wiring