

SERIES 771-EXTREME -30°C LED

Industrial dust and waterproof luminaires with LED modules for ambient temperature down to Ta -30 °C

With a new, opalised diffuser with unique light transmissivity! Specially developed for LED applications

YOUR MAIN BENEFITS:

The shape of 771-Favourite adapted for **extremely low (-30°C)** ambient temperatures.



FIELD OF APPLICATION:

Thanks to the construction principles of gasket, closing system and diffuser our LED fixtures ensure a high grade of protection (IP65, IP66) against dust, contamination and water permeation even at extremely low ambient temperature. In accordance with their IP grade they can be widely used to illuminate spaces with dusty, humid environment down to Ta -30 °C.

TECHNICAL DESCRIPTION AND BENEFITS:

- **Diffuser:** Our LED luminaires with opal diffuser offer you:
 - very good light efficiency through high light permeability, (up to 90% light transmissivity)
 - the usual, well-known features of the diffuser such as chemical and heat resistance, mechanical features, UV stabilization etc.Available in PC - injection moulded **Polycarbonate**.
Main advantages: high mechanical strength and high heat and shock resistance
- **Housing:** It is made of flame retardant glass fibre reinforced polyester (on request suitable for 850°C glow wire test too), in light grey (RAL7035) colour. Glass fibre reinforced polyester has very good temperature resistance, mechanical stability, furthermore it is a good electrical insulator, it resists the impacts of several chemicals and the impacts of weather conditions. Its stability of size and shape at changing temperatures is excellent.
- In order to ensure maximum temperature, chemical and weather resistance even under tough conditions, the **gasket** between the diffuser and housing is made of **silicon-based** foam with enhanced durability.
- **Fixing of the diffuser to the body:** with highly resistant stainless steel clips (standard or anti-vandal version).
- **Gear tray (reflector):** White powder coated steel sheet according to **Zhaga** standards or customised.
- **Electrical components:** in accordance with the requested specification suitable for LED technology, details see under technical data.

LED

CE

771-EXTREME -30°C LED

IP65



Option:

IP66

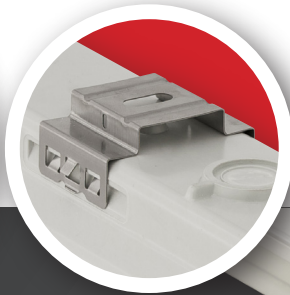




Main technical options



In order to ensure maximum heat, chemical and weather resistance even under tough conditions, the gasket between the diffuser and housing is made of silicon-based foam with enhanced durability.



Quick installation with stainless steel suspension brackets.



Comes with venting cable gland in order to prevent the build-up of moisture inside the luminaire thus avoiding its damage.

The opal diffusers are made of UV stabilized **opalised** material, specially developed for LED applications. This ensures among others a well-balanced light distribution and the elimination **of glare**.

Technical data (extract)

| Type | Power (W) | Warranty (Years) | Luminaire total luminous flux - emitted (lm) | Luminous efficacy (lm/W) | Correlated colour temp (Kelvin) | CRI | Lifetime L70B50 (Ta=+35°C) | A (mm) | C (mm) | Weight (kg) |
|-------------------------------------|-----------|------------------|--|--------------------------|---------------------------------|-----|----------------------------|--------|--------|-------------|
| Philips Fortimo LED Line HV4 | | | | | | | | | | |
| 771 2x1200mm* | 56 | 5 years | 7300 | 129 | 4000 | >80 | >70.000 h | 1277 | 476 | 3,1 |
| 771 2x1500mm* | 71 | 5 years | 9200 | 130 | 4000 | >80 | >70.000 h | 1577 | 1000 | 3,5 |

* The LED strips are placed in one line in a twin (wider) housing.

Other colour temperatures available on request

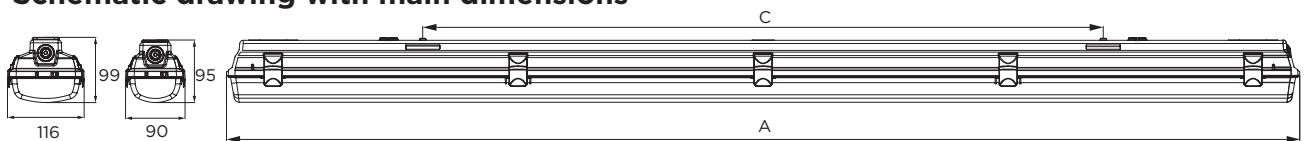
Further options:



On request:

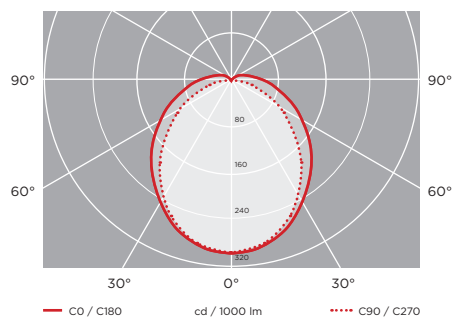


Schematic drawing with main dimensions

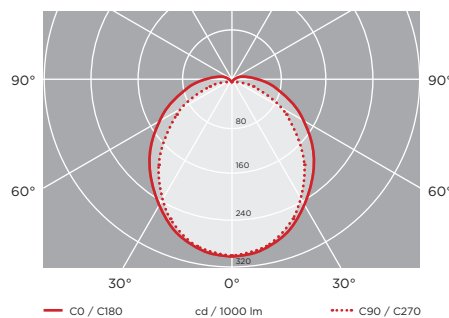


Photometric curves:

771-Extreme -30°C LED 71W (Fortimo)



771-Extreme -30°C LED 56W (Fortimo)



Luminaire customisation and the options of advanced controls are presented on page 7